



API 's CELE – Committee on Evaporative Loss Estimation

Kimber Hamilton


Marathon

Goal



- ◆ **Understand CELE Structure**
- ◆ **Understand Standard's Process**
- ◆ **Know where to find resources you need**

Current Situation



- ◆ **Tank emissions are receiving a lot of press**
- ◆ **You need to know where to secure information for estimating emissions**
- ◆ **To lead to a defensible response to regulators and public**

Agenda Topics



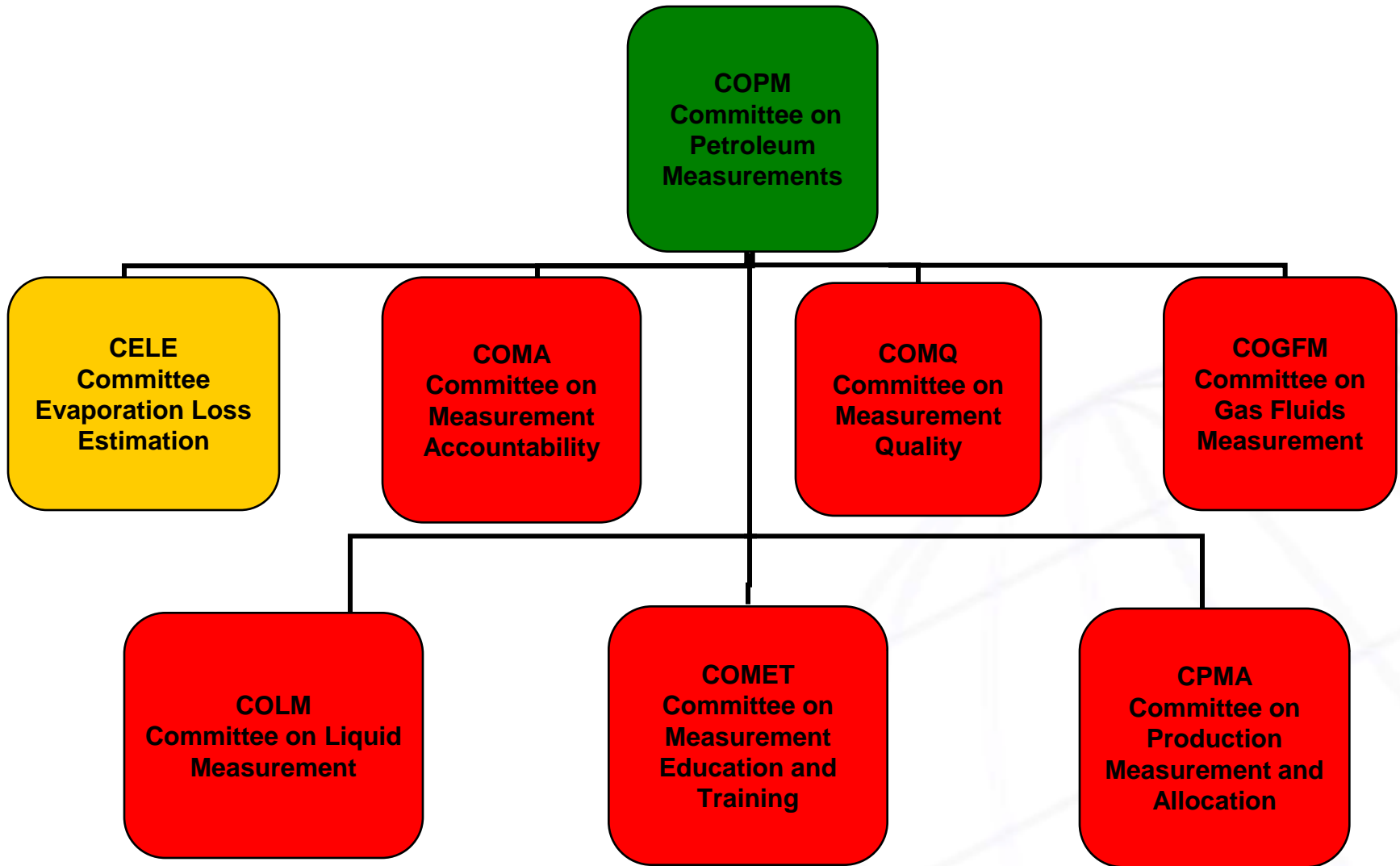
- ◆ **Committee Structure**
- ◆ **Committee Make Up**
- ◆ **Environmental Drivers**
- ◆ **Current Projects**
- ◆ **Path Forward**

Audience Benefits



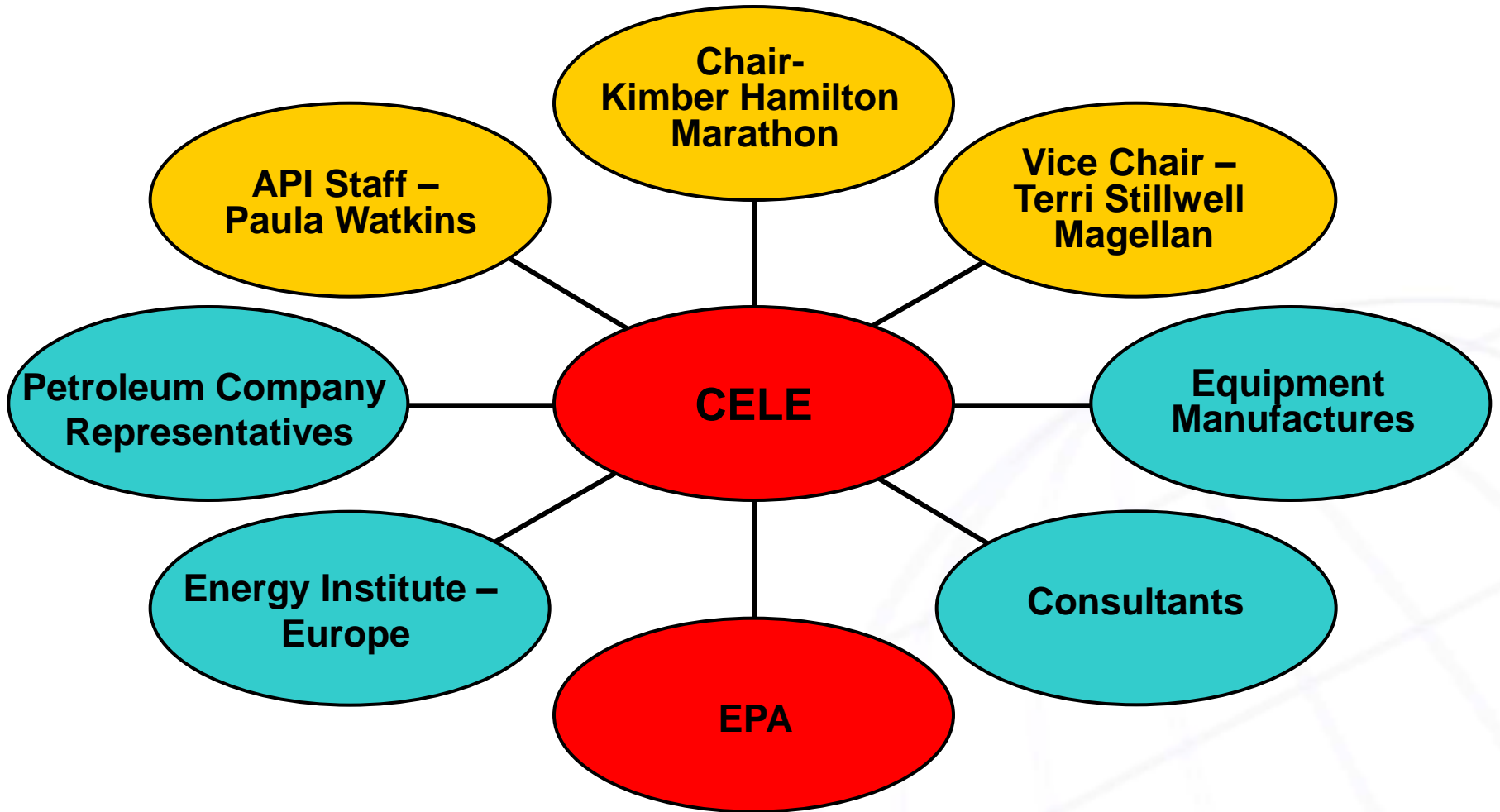
- ◆ **You know who to contact for information**
- ◆ **Maximum input to standards**
- ◆ **Responding to environmental issues**
- ◆ **Continuous improvement**
- ◆ **Improve defensibility**

API Committee Structure



You know the “who” to contact for a question

Committee Make Up



Maximum Input

Environmental Drivers



- ◆ **Regulators have new monitoring tools**
- ◆ **Looking at short term emissions**
- ◆ **Questioning estimation methodologies**
- ◆ **Maintenance and other non-routine emissions in permit**

Improve response to environmental issues

Projects



- ◆ **Update Chapter 19 Standards**
- ◆ **Technical Report for Tank Roof Landings and Tank Cleaning Emissions**
- ◆ **Technical Report for Closed Vent IFR's**

Continuous improvement in resources

Path Forward



- ◆ **Crude Oil Flashing Emissions and E&P Tanks**
- ◆ **Tank surface temperature**
- ◆ **Identify future needs for technical reports or standards**
- ◆ **Support other committees and task forces**

Improve your defense

Conclusion



Agenda Topics

- ◆ **Committee Structure**
- ◆ **Committee Make Up**
- ◆ **Environmental Drivers**
- ◆ **Current Projects**
- ◆ **Path Forward**

Audience Benefits

- ◆ **You know who to contact for information**
- ◆ **Maximum input to standards**
- ◆ **Responding to environmental issues**
- ◆ **Continuous improvement**
- ◆ **Improve defensibility**