

Date of Issue: May 2024

Affected Publication: API Specification 6A, *Specification for Wellhead and Tree Equipment*, 21<sup>st</sup> Edition, November 2018

## Errata 5

Table 34: The table shall be updated as highlighted below.

| Nominal Bore Size               | $L_1$ minimum |         | $D_1$   |         | $D_2$   |         |
|---------------------------------|---------------|---------|---|---------|---|---------|
|                                 | mm            | (in.)   | $^{+0.69}_{-0}$ mm $\left( \begin{smallmatrix} +0.027 \\ -0 \end{smallmatrix} \right.$ in.) | (in.)   | $^{+0.69}_{-0}$ mm $\left( \begin{smallmatrix} +0.027 \\ -0 \end{smallmatrix} \right.$ in.) | (in.)   |
| in.                             | mm            | (in.)   | mm  | (in.)   | mm  | (in.)   |
| 1 <sup>13</sup> / <sub>16</sub> | 76            | (3.00)  | 45.21   | (1.78)  | 38.6  | (1.52)  |
| 2 <sup>1</sup> / <sub>16</sub>  | 76            | (3.00)  | 51.56   | (2.03)  | 48.3  | (1.90)  |
| 2 <sup>9</sup> / <sub>16</sub>  | 76            | (3.00)  | 64.26   | (2.53)  | 59.7  | (2.35)  |
| 3 <sup>1</sup> / <sub>16</sub>  | 78            | (3.06)  | 76.96   | (3.03)  | 73.2  | (2.88)  |
| 3 <sup>1</sup> / <sub>8</sub>   | 79            | (3.12)  | 78.49   | (3.09)  | 73.2  | (2.88)  |
| 4 <sup>1</sup> / <sub>16</sub>  | 103           | (4.06)  | 102.36  | (4.03)  | 97.3  | (3.83)  |
| 4 <sup>1</sup> / <sub>8</sub>   | 105           | (4.12)  | 103.89  | (4.09)  | 100.8   | (3.97)  |
| 4 <sup>1</sup> / <sub>4</sub>   | 108           | (4.25)  | 107.19  | (4.22)  | 101.6   | (4.00)  |
| 5 <sup>1</sup> / <sub>8</sub>   | 130           | (5.12)  | 129.29  | (5.09)  | 126.2   | (4.97)  |
| 6                               | 152           | (6.00)  | 151.64  | (5.97)  | 148.6   | (5.85)  |
| 6 <sup>1</sup> / <sub>8</sub>   | 155           | (6.12)  | 154.69  | (6.09)  | 151.6   | (5.97)  |
| 6 <sup>3</sup> / <sub>8</sub>   | 162           | (6.38)  | 161.04  | (6.34)  | 158.0   | (6.22)  |
| 6 <sup>5</sup> / <sub>8</sub>   | 168           | (6.62)  | 167.39  | (6.59)  | 164.3   | (6.47)  |
| 7 <sup>1</sup> / <sub>16</sub>  | 179           | (7.06)  | 178.56  | (7.03)  | 175.5   | (6.91)  |
| 7 <sup>1</sup> / <sub>8</sub>   | 181           | (7.12)  | 180.09  | (7.09)  | 177.0   | (6.97)  |
| 9                               | 229           | (9.00)  | 227.84  | (8.97)  | 224.8   | (8.85)  |
| 11                              | 279           | (11.00) | 278.64  | (10.97) | 275.6   | (10.85) |

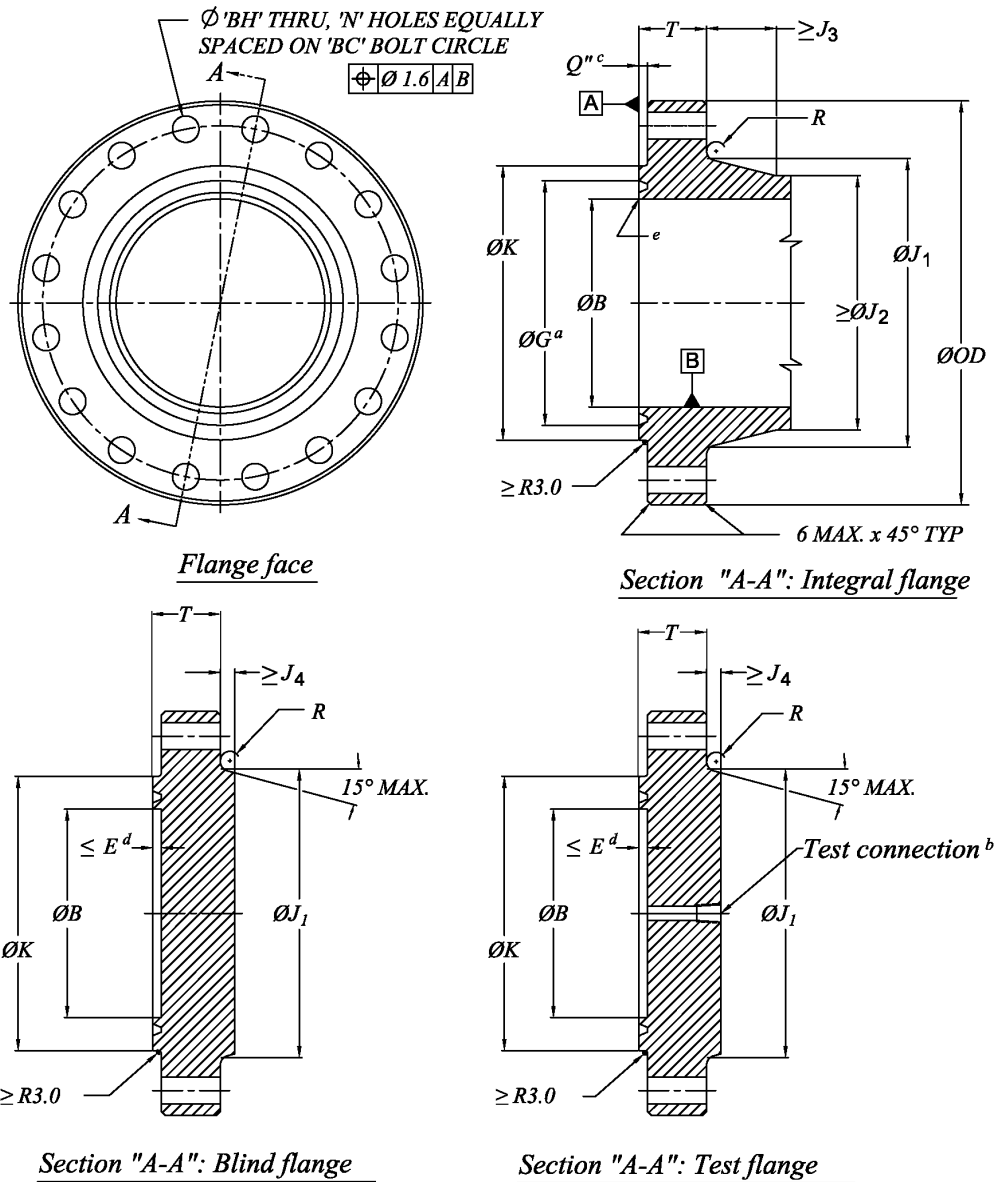
FOOTNOTES

<sup>a</sup> For valves,  $L_2$  = valve face-to-face length.

<sup>b</sup> For trees,  $L_2$  = 1065 mm (42 in.).

<sup>c</sup> For USV and BSDV valves with nonstandard bores, see 11.4.2.

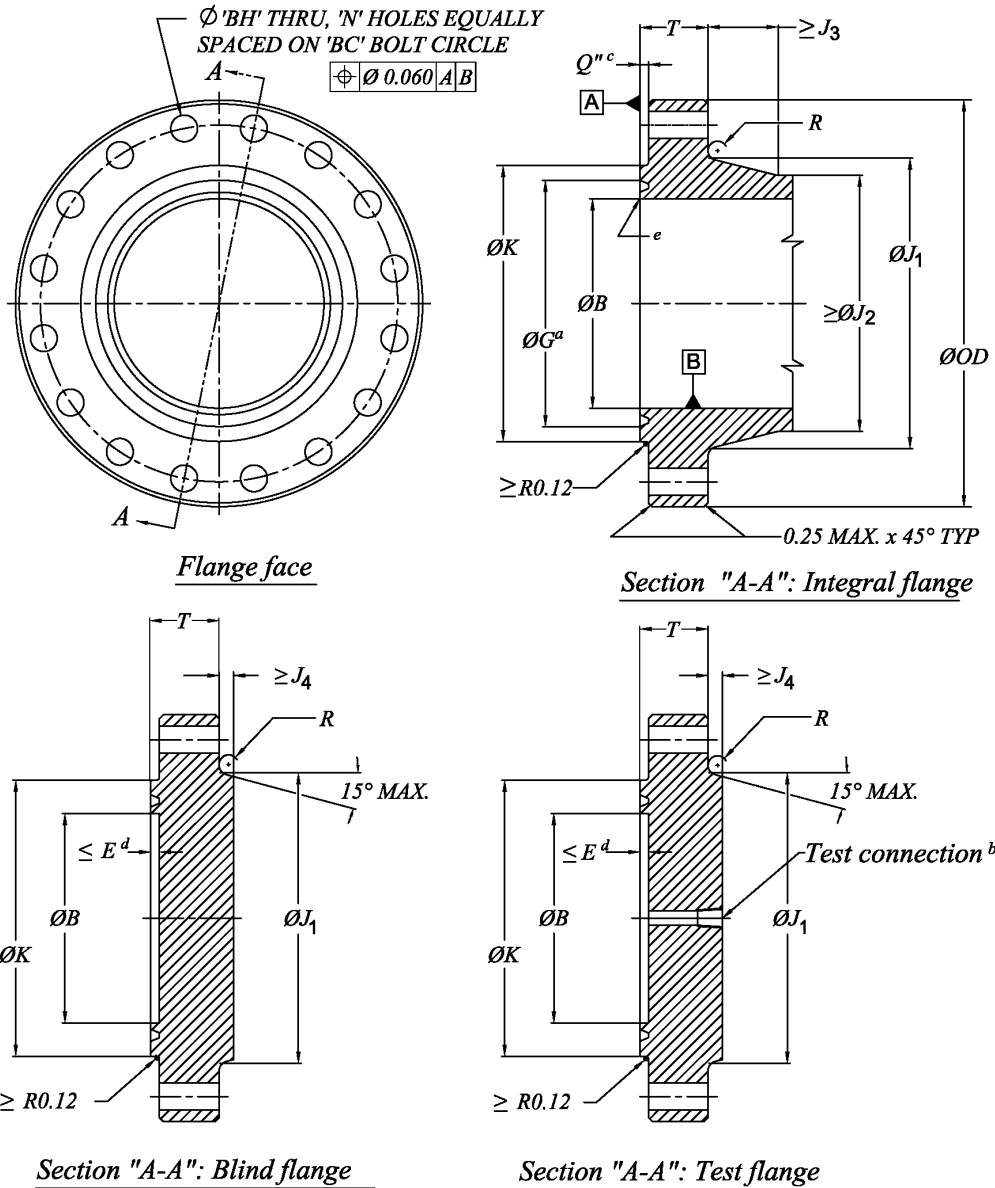
Table D.7: The figure in the table shall be replaced with the following:



FOOTNOTES

- <sup>a</sup> Ring groove shall be concentric with bore  $B$  within 0.25 mm diametrical runout. See Table D.11 for ring groove dimensions.
- <sup>b</sup> Test connection shall be  $\frac{1}{2}$  in. NPT or per 9.3 (Figure 5).
- <sup>c</sup>  $Q$ " min. = 3 mm (may be omitted for studded flanges).
- <sup>d</sup> Counterbore  $E$  for blind and test flanges is optional.
- <sup>e</sup> Break sharp corner.

Table E.7: The figure in the table shall be replaced with the following:



FOOTNOTES

- <sup>a</sup> Ring groove shall be concentric with bore *B* within 0.010 in. diametrical runout. See Table E.11 for ring groove dimensions.
- <sup>b</sup> Test connection shall be 1/2 in. NPT or per 9.3 (Figure 5).
- <sup>c</sup>  $Q''$  min. = 0.12 in. (may be omitted for studded flanges).
- <sup>d</sup> Counterbore *E* for blind and test flanges is optional.
- <sup>e</sup> Break sharp corner.

Table E.23: The table shall be updated as highlighted below.

| b) Flanged Full-bore and Reduced-opening Ball Valves           |                   |                                |          |          |            |                         |                         |
|--|-------------------|--------------------------------|----------|----------|------------|-------------------------|-------------------------|
| Nominal Size<br>in.  | Bore<br><i>B</i>  | <i>L</i> , Face-to-face Length |          |          |            |                         |                         |
|  |                   | 2000 psi                       | 3000 psi | 5000 psi | 10,000 psi | 15,000 psi <sup>a</sup> | 20,000 psi <sup>a</sup> |
| Tolerance>   | +0.03/-0          | ± 0.06                         | ± 0.06   | ± 0.06   | ± 0.06     | ± 0.06                  | ± 0.06                  |
| 1 <sup>13</sup> / <sub>16</sub>                                | 1.81              | —                              | —        | —        | 18.25      | 18.00                   | 21.00                   |
| 2 <sup>1</sup> / <sub>16</sub>                                 | 2.06              | 11.62                          | 14.62    | 14.62    | 20.50      | 19.00                   | 23.00                   |
| 2 <sup>9</sup> / <sub>16</sub>                                 | 2.56              | 13.12                          | 16.62    | 18.62    | 22.25      | 21.00                   | 26.50                   |
| 3 <sup>1</sup> / <sub>16</sub>                                 | 3.06              | —                              | —        | —        | 24.38      | 23.56                   | 30.50                   |
| 3 <sup>1</sup> / <sub>8</sub>                                  | 3.12              | 14.12                          | 15.12    | 18.62    | —          | —                       | —                       |
| 4 <sup>1</sup> / <sub>16</sub>                                 | 4.06              | 17.12                          | 18.12    | 21.62    | 26.38      | 29.00                   | —                       |
| 5 <sup>1</sup> / <sub>8</sub>                                  | 5.12 <sup>b</sup> | —                              | —        | —        | 29.00      | 35.00                   | —                       |
| 7 <sup>1</sup> / <sub>16</sub> x 6                             | 6.00              | 22.12                          | 24.12    | 28.00    | —          | —                       | —                       |
| 7 <sup>1</sup> / <sub>16</sub> x 6 <sup>3</sup> / <sub>8</sub> | 6.38              | —                              | —        | —        | 35.00      | 41.00                   | —                       |
| 7 <sup>1</sup> / <sub>16</sub>                                 | 7.06              | —                              | —        | —        | 35.00      | 41.00                   | PMR                     |
| 9  | 9.00              | —                              | —        | —        | PMR        | —                       | —                       |

FOOTNOTE

<sup>a</sup> Applies to full bore only.

<sup>b</sup> Bore tolerance for 5<sup>1</sup>/<sub>8</sub> in. size is +0.04/-0.