

Date of Issue: December 2008

Affected Publication: API Specification 6A/ISO 10423:2003, *Specification for Wellhead and Christmas Tree Equipment*, Nineteenth Edition, July 2004

Addendum 4

Add the following clause as new 10.21.4

10.21.4 Coating

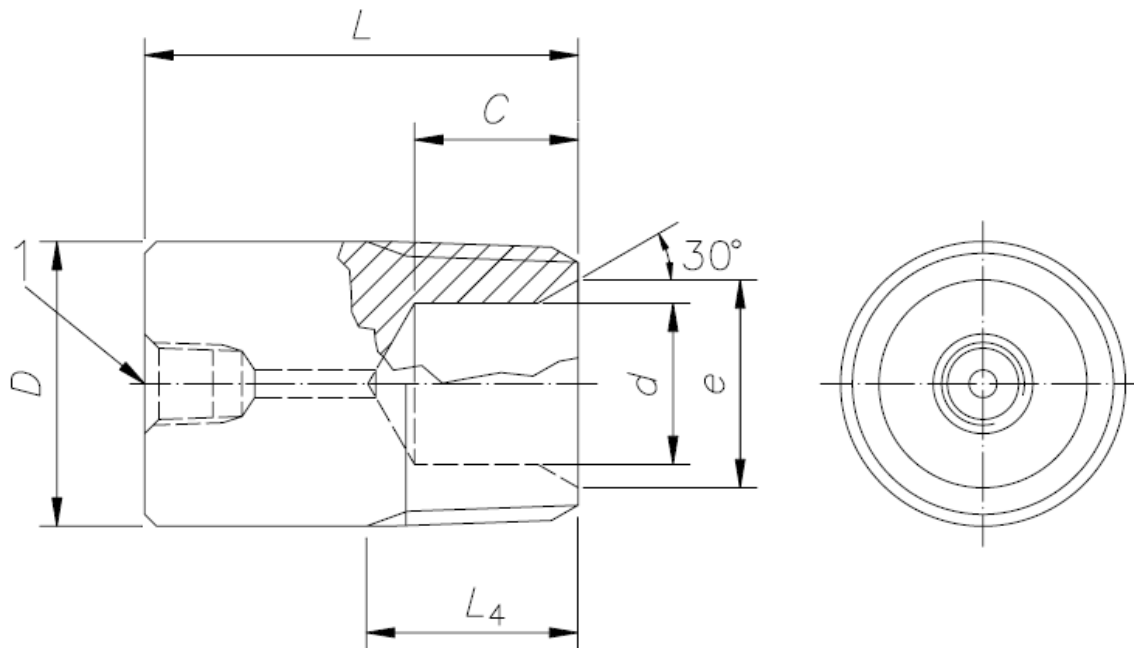
Bullplug threads shall be zinc or tin electroplated or phosphated, or processed by some other acceptable method which will minimize galling and develop the maximum leak resistance characteristics of the connection. The threads shall be gauged after coating.

Renumber existing 10.21.4 Quality Control to 10.21.5 Quality Control

Renumber existing 10.21.5 Marking to 10.21.6 Marking

Renumber existing 10.21.6 Storing and Shipping to 10.21.7 Storing and Shipping

Replace drawing in Table 85 and Table B.85 [“a) Round plug” figure] with figure shown below:



Replace Table 85 with Table 85 shown below:

Nominal thread size	All bullplugs					Round plugs	Plugs with external hex			Plugs with internal hex		
	Diameter of round	Minimum length of thread to vanish point	Depth of counter-bore ^a	Diameter of counter-bore ^b	Diameter of Chamfer ^k	Overall length ^b	Hex size (across flats)	Height of hex ^b	Length of plug with external hex ^b	Internal hex size	Depth of hex ^b	Length of plug with internal hex ^b
I	D	L ₄	C	d	e	L	H _e	B	L _e	H _i	G	L _i
1/2	21,43 ^c	19,85	None	None	None	51,0	22,2 ^e	7,9	28,7	9,7 ^h	7,9	25,4
3/4	26,59 ^c	20,15	None	None	None	51,0	27,0 ^f	9,7	31,8	14,2 ⁱ	7,9	25,4
1	33,34 ^d	25,01	None	None	None	51,0	34,9 ^g	9,7	35,1	16,0 ^j	9,7	25,4
1 1/4	42,07 ^d	25,62	27,0	22,4	None	51,0	—	—	—	—	—	—
1 1/2	48,42 ^d	26,04	27,0	25,4	None	51,0	—	—	—	—	—	—
2	60,33 ^d	26,88	64,0	41,0	50,8	102,0	—	—	—	—	—	—
2 1/2	73,03 ^d	39,91	41,5	44,5	None	102,0	—	—	—	—	—	—
3	88,90 ^d	41,50	41,5	57,2	None	102,0	—	—	—	—	—	—
3 1/2	101,60 ^d	42,77	44,5	69,9	None	102,0	—	—	—	—	—	—
4	114,30 ^d	44,04	44,5	76,2	None	102,0	—	—	—	—	—	—
^a	Tolerance	± 0,5								^h	Tolerance	+0 -0,10
^b	Tolerance	+1,0 -0			^e	Tolerance	+0 -0,64			ⁱ	Tolerance	+0 -0,13
^c	Tolerance	+0,20 -0			^f	Tolerance	+0 -0,79			^j	Tolerance	+0 -0,15
^d	Tolerance	+0,25 -0			^g	Tolerance	+0 -1,04			^k	Tolerance	+0,5 -0

